

-PowerBreaker-

Consumer Units with Main Switch

Consumer units with 100A Switch for use with RCBO Modules

The range is available in 8 Board layouts - 8 modules / 10 modules / 12 modules / 14 modules / 16 modules / 18 modules / 20 modules & 22 modules.

Consumer Units with 100A Switch Contents:-

- 2P Mains Switch 100A
- 1 Neutral bar
- Detachable Spirit level
- Plus label kit
- 3 year Guarantee



Image showing Closed Unit



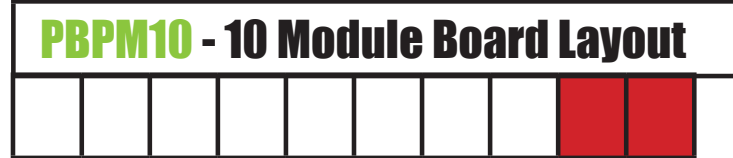
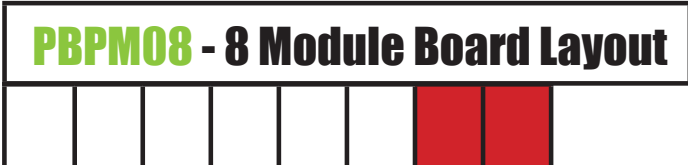
Consumer Unit Board Modules	
Space for Modules (Free Ways)	Main Switch

PBPM08 - 8 Modules:-

- 6 Free Ways
- 16mm² Neutral cable
- Supplied with 2 blanking plates

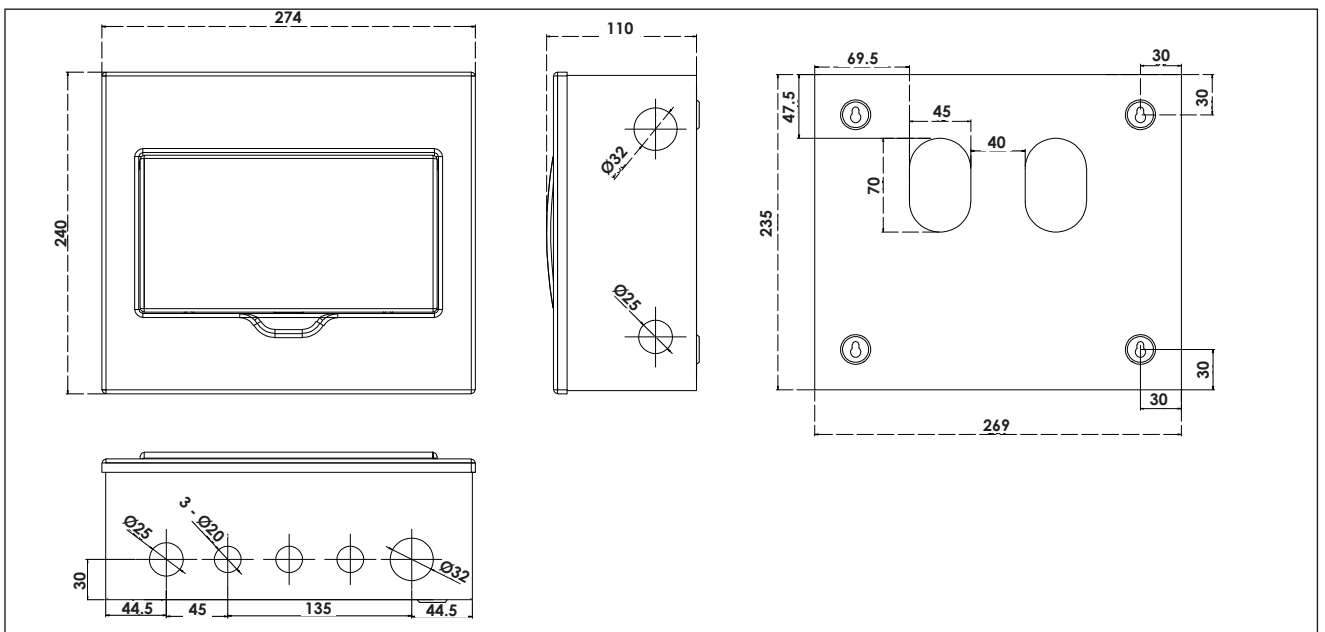
PBPM10 - 10 Modules:-

- 8 Free Ways
- 16mm² Neutral cable
- Supplied with 2 blanking plates



8 - 10 Way Dimensions

For consumer Units - PBPM08 & PBPM10



-PowerBreaker-

Consumer Units with Main Switch

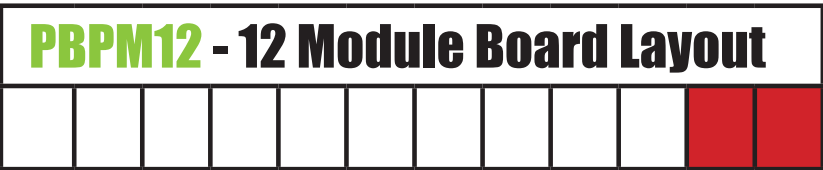
Consumer units with 100A Switch for use with RCBO Modules

Consumer Unit Board Modules

Space for Modules (Free Ways)	Main Switch
-------------------------------	-------------

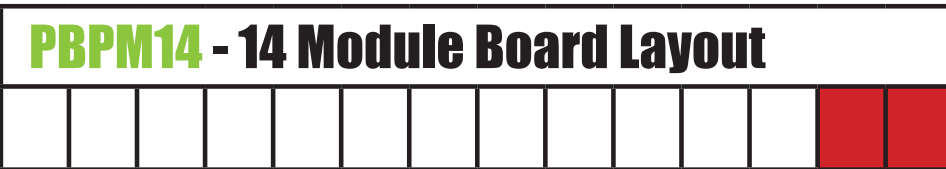
PBPM12 - 12 Modules:-

- 10 Free Ways
- 16mm² Neutral cable
- Supplied with 2 blanking plates



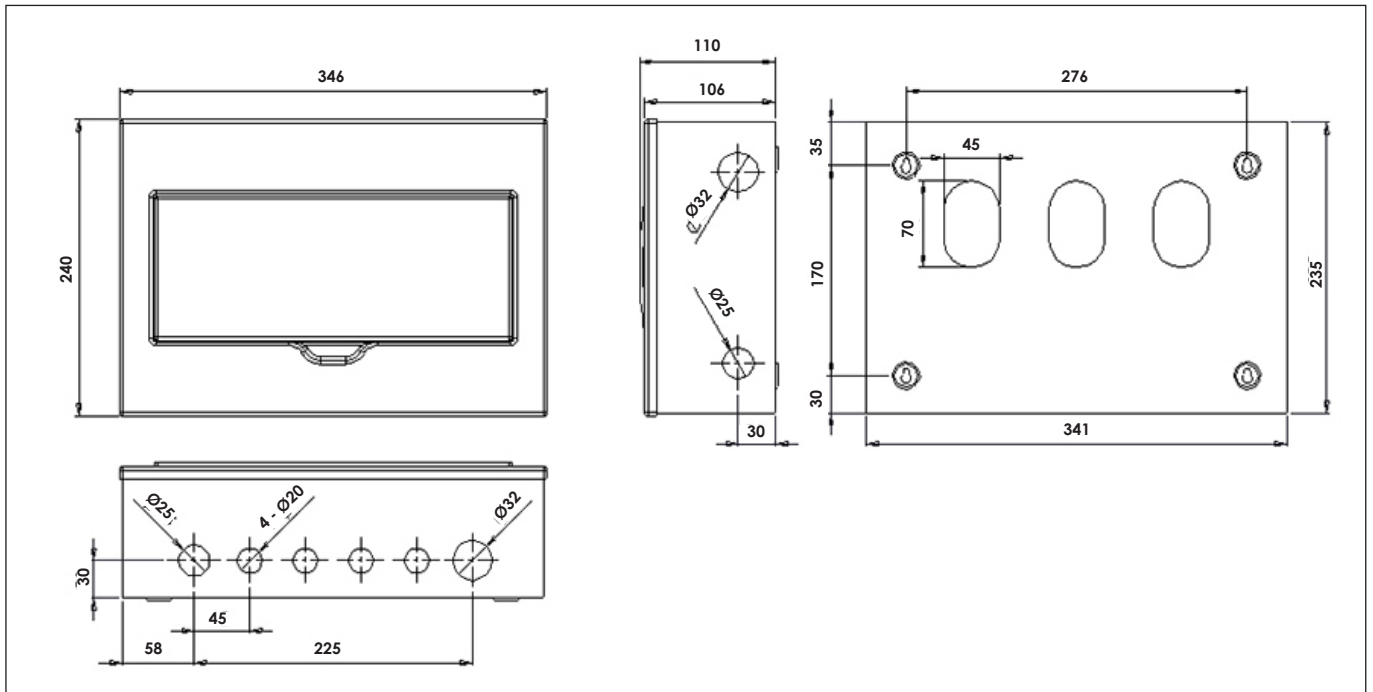
PBPM14 - 14 Modules:-

- 12 Free Ways
- 16mm² Neutral cable
- Supplied with 2 blanking plates



12 - 14 Way Dimensions

For consumer Units - PBPM12 & PBPM14



-PowerBreaker-

Consumer Units with Main Switch

Consumer units with 100A Switch for use with RCBO Modules

Consumer Unit Board Modules

Space for Modules
(Free Ways)

Main Switch

PBPM16 - 16 Modules:-

- 14 Free Ways
- 16mm² Neutral cable
- Supplied with 2 blanking plates



Image showing inside PBPM18

PBPM16 - 16 Module Board Layout



PBPM18 - 18 Modules:-

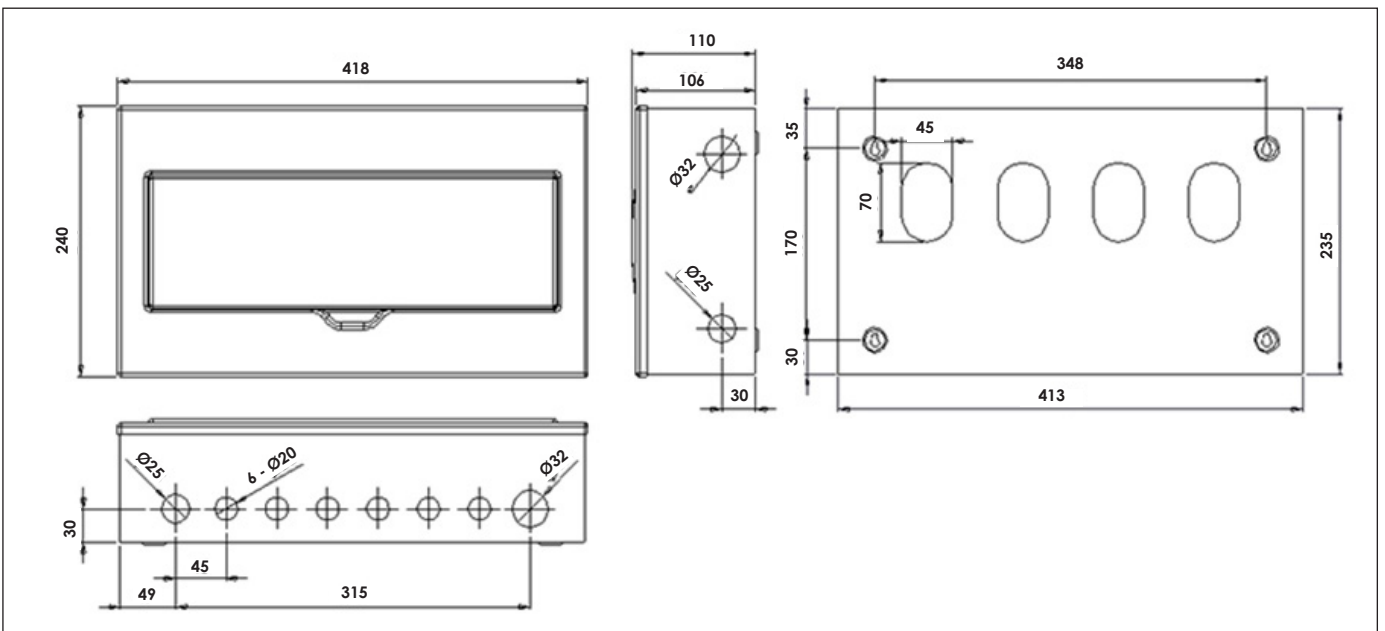
- 16 Free Ways
- 16mm² Neutral cable
- Supplied with 2 blanking plates

PBPM18 - 18 Module Board Layout



16 - 18 Way Dimensions

For consumer Units - PBPM16 & PBPM18



-PowerBreaker-

Consumer Units with Main Switch

Consumer units with 100A Switch for use with RCBO Modules



Image showing Open PBPM22

Consumer Unit Board Modules	
Space for Modules (Free Ways)	Main Switch

PBPM20 - 20 Modules:-

- 18 Free Ways
- 16mm² Neutral cable
- Supplied with 4 blanking plates

PBPM20 - 20 Module Board Layout



PBPM22 - 22 Modules:-

- 20 Free Ways
- 25mm² Neutral cable
- Supplied with 4 blanking plates

PBPM22 - 22 Module Board Layout



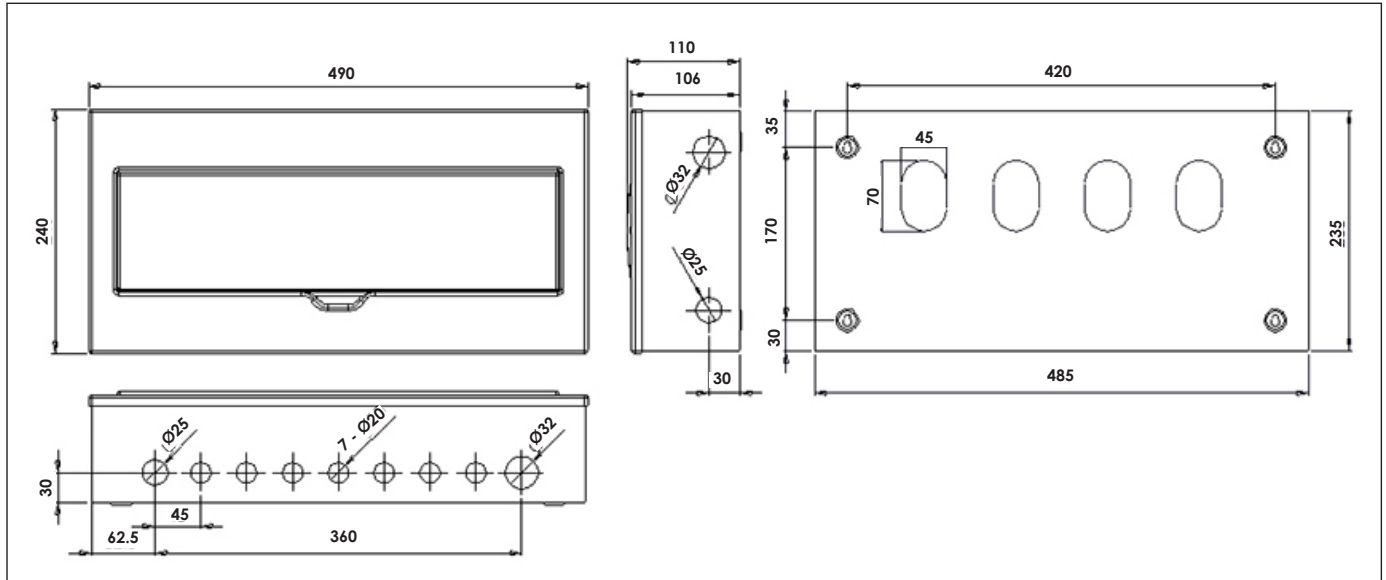
-PowerBreaker-

Consumer Units with Main Switch

Consumer units with 100A Switch for use with RCBO Modules

20 - 22 Way Dimensions

For consumer Units - PBPM20 & PBPM22



Technical Information

	PBPM08	PBPM10	PBPM12	PBPM14	PBPM16	PBPM18	PBPM20	PBPM22
Description	Consumer Units with Main Switch							
Barcode	5012739 653865	5012739 653872	5012739 653889	5012739 648731	5012739 653896	5012739 648748	5012739 648755	5012739 648762
Weight								
Impact Rating	IK 05	IK 05	IK 05	IK 05	IK 05	IK 05	IK 05	IK 05
IP Rating	IPX4	IPX4	IPX4	IPX4	IPX4	IPX4	IPX4	IPX4
Colour	White Ral 9003	White Ral 9003	White Ral 9003	White Ral 9003	White Ral 9003	White Ral 9003	White Ral 9003	White Ral 9003
Enclosure	Steel	Steel	Steel	Steel	Steel	Steel	Steel	Steel
Guarantee	3 Years							
Conforms To	BS EN 61439-3							

TECHNICAL DATA SHEET

**GREEN
BROOK**
ELECTRICAL

Tel: 01279 772 772

Fax: 01279 422 007

Email: sales@greenbrook.co.uk

www.greenbrook.co.uk

